



**Maricopa County
Public Health**

WeArePublicHealth.org

MCDPH Climate and Health Resources

Energy Insecurity Workgroup Meeting

Outline



Data Request



Mapping



Community Engagement

Data Request

Hospital

- Emergency
- Hospitalizations

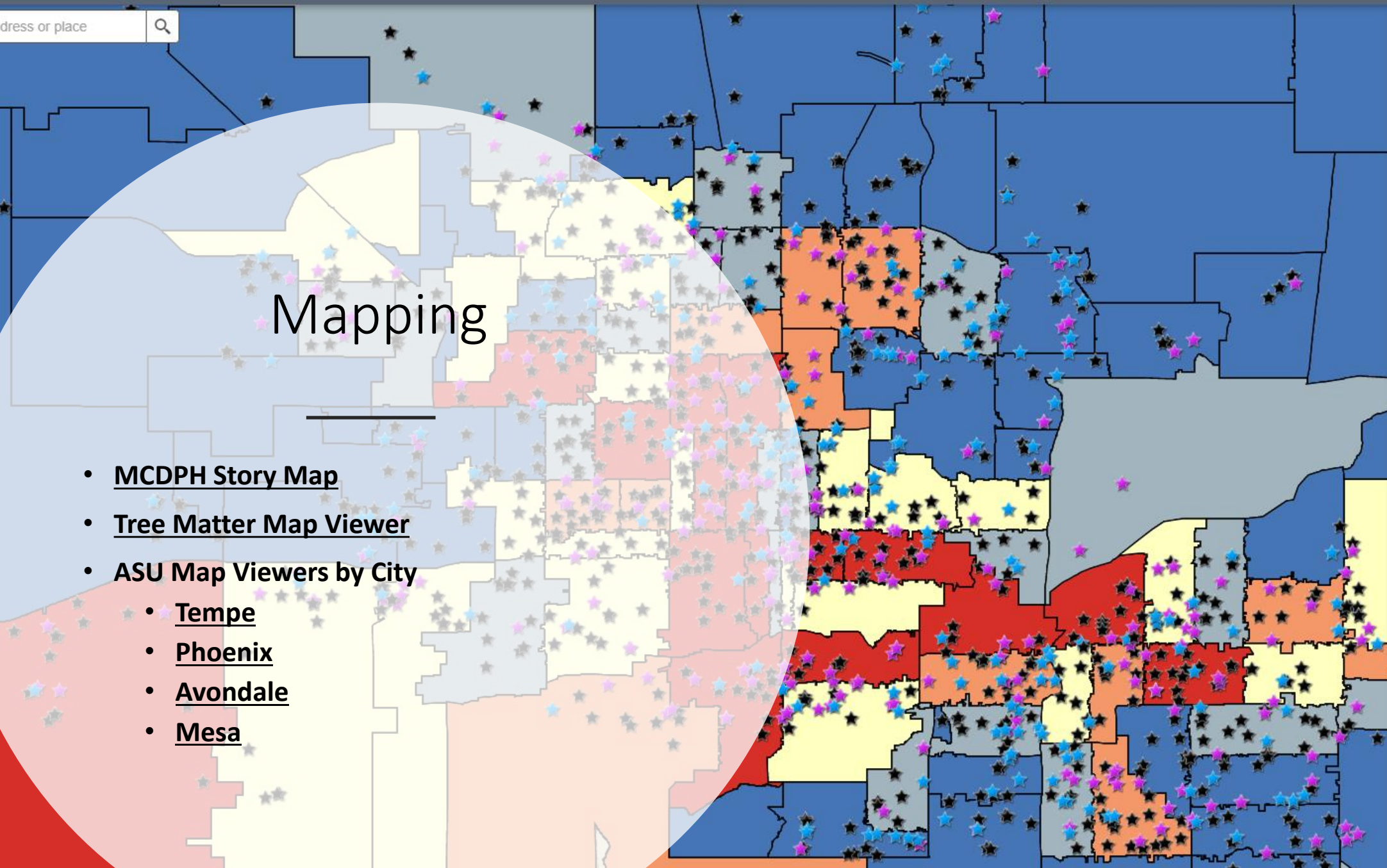
Vital Records

- Death
- Birth

Survey Data

- Perception on Environmental Heat
- Coping Mechanisms
- Barriers to Resources

Address or place



Mapping

- [MCDPH Story Map](#)
- [Tree Matter Map Viewer](#)
- [ASU Map Viewers by City](#)
 - [Tempe](#)
 - [Phoenix](#)
 - [Avondale](#)
 - [Mesa](#)

Layer List

Layers

- Schools
 - ★ Charter
 - ★ Private
 - ★ Public
- Tree Need by Zip Code

Total weight

- High
- Medium High
- Medium
- Medium Low
- Low

Avondale

No issues detected × Edit × A Story Map

- Avondale - Poverty
- Avondale - Asthma
- Avondale - Heat Deaths
- Avondale - Heat Illness
- Avondale - COPD
- Avondale - Diabetes
- Avondale - Mental Illness
- Avondale - Heart Disease

Heat_Refuge



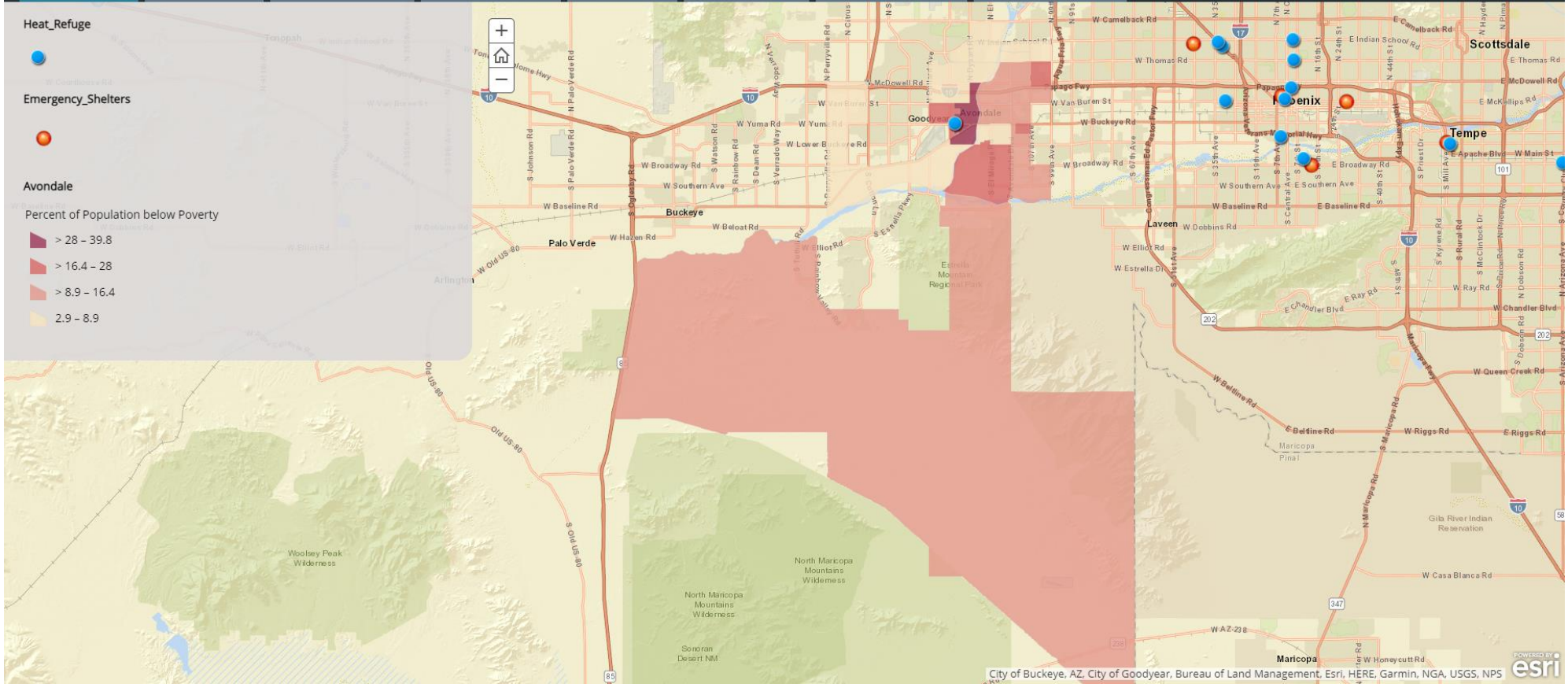
Emergency_Shelters



Avondale

Percent of Population below Poverty

- > 28 - 39.8
- > 16.4 - 28
- > 8.9 - 16.4
- 2.9 - 8.9



Community Engagement



**HEALTH IMPROVEMENT
PARTNERSHIP OF
MARICOPA COUNTY**
www.hipmc.org



Schools



Cross-Sector Collaborations



Healthy Communities

Non-MCDPH Resources

- ADHS / EPHT Viewer
 - <https://gis.azdhs.gov/ephtexplorer/>
- CDC Social Vulnerability Index
 - <https://www.atsdr.cdc.gov/placeandhealth/svi/index.html>
- Maricopa Association of Governments
 - <https://www.azmag.gov/Programs/Maps-and-Data>